



INTERNATIONAL
UNIVERSITY OF
MALAYA-WALES

Owned by:



UNIVERSITI
MALAYA



University of Wales
Prifysgol Cymru



Foundation Studies

Unleash Your Potential

Entry 2023

IUMW at a Glance

Owned by two prestigious universities, the **International University of Malaya-Wales (IUMW)** was established based on a mutual partnership between **Universiti Malaya (UM)** & the **University of Wales, UK**, in 2013. Since then, the university has experienced tremendous growth and remains committed to delivering education based on employability to develop students who are ready to contribute towards the next industrial revolution.



A Collaboration between the University of Wales & Universiti Malaya.



1905

Formation of Universiti Malaya (UM)

The oldest university in Malaysia, Universiti Malaya has its roots in Singapore with the establishment of King Edward VII College of Medicine on 28 September 1905.



2015

First convocation of the International University of Malaya-Wales.

1893

Formation of the University of Wales (UW)

Formed by Royal Charter in 1893, the University of Wales was regarded as one of the most important political and social developments in the nineteenth century.



2013

Formation of the International University of Malaya-Wales (IUMW)

A joint venture between Universiti Malaya and the University of Wales.



2023

A community of almost 3000 students, staff and alumni from across the globe.



Why Study Foundation at IUMW?



Lecturer support

- All academic staff have at least a Master's qualification, and students also receive sessions presented by degree-level faculty members.

Industry Focused

- Students are exposed to real working environments through industrial visits to local and international organisations in the public, private and voluntary sector

Varied Assessment Programme

- Students are assessed via a mixture of coursework, assignments and exams, to allow for multiple opportunities, in varying contexts, to demonstrate what they know and can do.

Lab Facilities

- Experience quality laboratory facilities for Biology, Chemistry and Physics at the Universiti Malaya.

Local & Worldwide Recognition

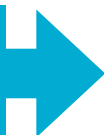
- Accredited by MQA
- Widely recognised by local and international institutions
- Recognised by the University of Wales Trinity Saint David

Focused Streaming

- General or focused streams available
- Choose a focused stream for more exposure in your subject of interest

Study Pathway @ IUMW

Foundation
programme
(1 year)



Bachelor's
programme
(3 years)



Master's
(1.5 years)



PhD or DBA
(3 years min)

Full-time and Part-time available

FOUNDATION IN ARTS

(R2/0011/3/0160)(06/28)(MQA/FA3101)

The Foundation in Arts programme at IUMW acts as a prerequisite for students who intend to pursue their degree within the fields of arts, humanities, business, media, social sciences, and information technology. You will gain the knowledge you need to start your degree with confidence, as well as soft skills like critical thinking, and boost your proficiency in the English language.

A solid foundation programme can give you an advantage in entering higher education directly after high school by providing you with essential academic preparation and skills. Using tertiary-style teaching with lectures, tutorials, and seminar-type classes, you can kick-start your undergraduate endeavours on a firm platform. With IUMW, you will find yourself academically ready and personally confident enough to succeed at your chosen undergraduate course.

FOUNDATION IN ARTS Open and Distance Learning (ODL)

(N/DL/0011/3/0018)(02/28)(MQA/PA16079)

Our Foundation in Arts (Open and Distance Learning) programme is a dynamic online pathway to academic excellence. It is designed for students seeking a flexible and accessible learning experience, offering the same comprehensive curriculum as our traditional Foundation Programme but with the convenience of studying 100% online.

Throughout this preparatory year, you will dive into specialised subjects and modules that lay the groundwork for your degree. Through engaging virtual modules, interactive learning materials, and dedicated online support, you can embark on your academic journey from anywhere, at any time. You will develop crucial skills, such as independent and creative thinking, effective communication, and proficiency in the English language. Join our Foundation programme and unlock your potential for success in higher education.



ENTRY REQUIREMENTS

- SPM/SPMV Credit in any five (5) subjects
- O Level Grade C in any five (5) subjects
- UEC Grade B in three (3) subjects
- IB-Middle Year Programme 28 total points across the certificate's 7 components
- Other qualifications recognised as equivalent

Intakes | January / May / September

Duration | 1 Year

Programme Modules

SEMESTER 1

- Co-curriculum
- Study Skills
- Introduction to Psychology
- Basic Business
- Introduction to Legal Studies
- Mathematics*
- Introduction to Media Production and Presentation*

**Choose any ONE (1) elective*

SEMESTER 2

- Project Integration
- English 1
- Critical Thinking
- Introduction to Humanities
- Introduction to Communication
- Basic Accounting & Finance*
- Introduction to Creative Visual Studies*

**Choose any ONE (1) elective*

SEMESTER 3

- English 2
- Information & Communication Technology
- Statistics & Probability
- Introduction to Media Studies
- Introduction to International Integration*
- Introduction to Event Management*

**Choose any ONE (1) elective*

Students may choose either stream (Business/Media) at the beginning of the semester. Elective modules for the streams are fixed.

FOUNDATION IN SCIENCE

(R2/0011/3/0120)(03/28)(MQA/FA3102)

The Foundation in Science programme at IUMW will equip you with fundamental knowledge in your chosen field, emphasising specialised subjects and modules that pave the way for your science degree. Offering a range of core and elective subjects, this preparatory year allows you to explore diverse topics while also focusing on your area of interest.

Throughout this preparatory year, you will acquire the specific knowledge required to pursue degrees in health, science, technology, engineering, mathematics, or information technology. Through practical exposure and hands-on learning, you will develop a solid grasp of core science principles, ensuring your readiness to excel in undergraduate studies. Access to the exceptional laboratory facilities at Universiti Malaya empowers you to conduct hands-on experiments, foster critical thinking, and cultivate practical skills, providing you with a valuable advantage.

Full-time and Part-time available

FOUNDATION IN SCIENCE

Open and Distance Learning (ODL)

(N/DL/0011/3/0019)(02/28)(MQA/PA16080)

Our Foundation in Science (Open and Distance Learning) programme is a comprehensive online pathway towards a successful career in a range of scientific fields. This programme offers the same foundational curriculum as our traditional Foundation in Science programme but with the added flexibility and convenience of studying online.

Throughout this preparatory year, you will dive into specialised modules that lay the groundwork for your science degree. The programme combines core and elective subjects, providing you with the opportunity to explore specialist topics within your chosen field.

Our online platform offers engaging modules, interactive learning materials, and dedicated support to facilitate your academic growth and success. Join our Foundation programme and unlock your potential in the exciting world of science.

ENTRY REQUIREMENTS

Field of Studies	SPM/SPMV/O Level	UEC	Field of Studies	SPM/SPMV/O Level	UEC
IT and Information Systems	Minimum Credit in five (5) subjects including: • Mathematics	Minimum grade B in three (3) subjects including: • Mathematics	Medicine OR Dentistry	Minimum grade B in • Biology • Chemistry • Physics • Mathematics OR Additional Mathematics • Any one (1) subject	Minimum grade B4 in three (3) subjects: • Biology • Chemistry • Physics OR Mathematics OR Additional Mathematics
Built Environment	Pass SPM/SPMV with minimum Credit in five (5) subjects including Mathematics, OR Pass O-Level with minimum credit in five (5) subjects including Mathematics	Minimum grade B in three (3) subjects including Mathematics			Dentistry: Minimum grade B4 in four (4) subjects: • Biology • Chemistry • Physics • Mathematics OR Additional Mathematics • any one (1) subject
Computer Science	Minimum credit in five (5) subjects including: • Additional Mathematics OR • Maths and any one (1) science, technology or engineering subject OR • Its equivalent	Minimum grade B in three (3) subjects including: • Additional Mathematics • Any one (1) science, technology or engineering subject			
Allied Health Sciences	Minimum credit in 5 subjects including any of these 3 subjects: • Biology • Physics • Mathematics • Chemistry • English	Minimum grade B in any three (3) of the following subjects: • Biology • Physics • Mathematics • Chemistry • English	Pharmacy	Pass SPM with minimum grade B in five subjects below., OR Pass O-level with minimum grade C in five (5) subjects: • Mathematics OR Additional Mathematics • Physics • Chemistry • Biology • any one (1) subject	Not available
Engineering	Minimum Credit in five (5) subjects including: • Mathematics • One physical science subject	Minimum grade B in three (3) subjects including: • Mathematics • One physical science subject	Science e.g. BSc (Hons) Biochemistry	Minimum credit in five (5) subjects including: • Mathematics • Any two (2) science subjects	Minimum grade B in subjects: • Mathematics • Any two (2) science subjects

- Other equivalent qualifications recognised by the Malaysian Government or University's Senate

Intakes | January / May / September

Duration | 1 Year

Programme Modules

SEMESTER 1

- Co-curriculum
- Study Skills
- Chemistry 1
- Physics 1
- Mathematics 1
- Biology 1*
- Computer Systems*

*Choose any ONE (1) elective

SEMESTER 2

- Project Integration
- English 1
- Critical Thinking
- Chemistry 2
- Physics 2
- Mathematics 2
- Biology 2*
- Introduction to Computer Programming*

*Choose any ONE (1) elective

SEMESTER 3

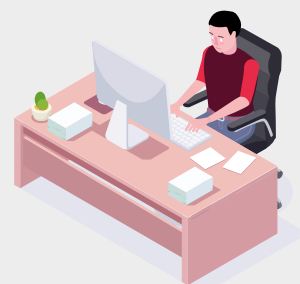
- English 2
- Information & Communication Technology
- Chemistry 3
- Physics 3
- Statistics & Probability
- Biology 3*
- Analysing and Solving Problem

*Choose any ONE (1) elective

*Students may choose either stream (Science/Computing) at the beginning of the semester. Elective modules for the streams are fixed.

HOW TO APPLY

The IUMW family is waiting to welcome you. Start the application process in one simple step!



Online application: www.iumw.edu.my/admissions/apply-now/



International University of Malaya-Wales

DU039(W) 201101030828 (958963-T)

Administration Wing, 1st Floor, Block A
City Campus, Jalan Tun Ismail
50480 Kuala Lumpur, Malaysia

T +603 2617 3299
P +6012 344 9661
E enquiry@iumw.edu.my

iumw.edu.my

Visiting the University.



DISCLAIMER

Disclaimer IUMW has used reasonable endeavours to ensure that the information contained in this publication is correct at the time of printing but this information may be subject to corrections or changes without prior notice. IUMW reserves the right to alter, change, or discontinue programmes and courses without prior notice. IUMW assumes no responsibility for the accuracy of information provided by third parties. The publication of programme details in this document does not create an obligation on the part of IUMW to teach a programme in any given year, or teach it in the mode described in this publication. It is the responsibility of students to check and confirm all general and programme specific information prior to application and enrolment. In particular, programme offerings, duration, mode, commencement, campus location, fees, and entry requirements need to be checked and confirmed. The information in this brochure is correct at the time of printing (September 2023). Changes may be made without prior notice. Refer to IUMW's official website for the latest updates.